



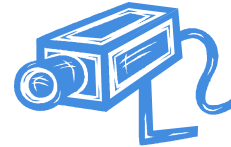
**SECURITY UPDATES**

Recently the Board of Directors hired an off duty Louisville Metro Police Officer to patrol the neighborhood on a rotating schedule that includes four days per week. The officer will patrol the entire neighborhood, specifically targeting people who are speeding and disobeying traffic laws, as well as focus on preventing acts of vandalism and theft.

Due to the investment the board recently made in upgrading the surveillance equipment at the clubhouse, we were able to catch an act of vandalism on camera, and track down the offender to take appropriate action. The entire clubhouse property both inside and out-

side is now monitored and recorded 24 hours a day. Anyone who violates clubhouse rules or engages in any type of illegal activity will have their clubhouse privileges suspended and/or be prosecuted to the fullest extent of the law.

It is important to remember that if you see suspicious activity or acts of vandalism anywhere in the neighborhood or at the clubhouse, please report it immediately to the police. Don't hesitate to contact Sydney Lawson at 498-2403 if you witness anything out of the ordinary or happen to notice something that needs the attention of the board of directors.



**ANNUAL MEETING AND ELECTIONS**

The Cooper Farms Community and Recreational Associations Annual Meeting will be held on  
**Wednesday, January 11, 2012  
at 6:30P.M.**  
at the Cooper Farms Clubhouse located at 10500 Leven Blvd.

This year the Board of Directors is seeking nominations for 2 positions which are up for election at the annual meeting to serve a two (2) year term. The Board of Directors meet once a month to discuss and handle the operations for both Cooper Farms Associations.

If you are interested in running for the Board please contact Sydney at 498-2403 to be added to the ballot and to fill out the candidate form which needs to be on file prior to the annual meeting.

**Meet and Greet Santa Claus**  
Come join us at the clubhouse on  
**Saturday, December 17th**  
**11:00am - 1:00pm**





Santa Claus and Mrs. Claus are making a special trip to Cooper Farms again this year!  
Bring your children and a camera to capture this special visit with Santa! There will be milk and cookies for the kids.

**(Members Only Please)**

**Board of Directors**

President:  
Chris Lewis

Vice President:  
Daniel Melvin

Secretary:  
Ellen Edwards

Treasurer:  
Franklin Wechsler

Member at Large:  
Mike Bodine

Please slow down,  
watch your speed!



Visit Santa and enter a free raffle to win a \$50 Toy-R-Us gift card. Two prizes will be awarded.  
(Kids Only)

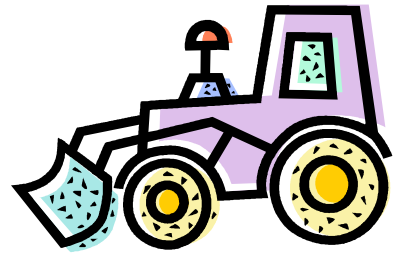


# Snow Removal

In order to focus on improving snow removal in the neighborhood the board of directors has approved additional funds to be allocated for snow and ice removal this season. Anytime we receive a minimum of 4 inches of snow (this was previously set at 5 inches) or .25 inches of ice, Valley Crest will automatically begin to plow the streets without direction from the board. During smaller snow or ice events the board of directors will approve plowing and distribution of salt on a case-by-case basis depending on the current budget.

Just as in previous years, due to the hill at the entrance on Black Walnut Blvd, this location will be plowed and salted during any snow or ice event. The clubhouse property will also continue to be plowed during any snow or ice event because of the high amount of traffic in the parking lot.

Additionally, now that the final coat of pavement is in the process of being completed in Sections 5-9, our snow removal contractor will be able to properly plow all of the streets during a snow event without damaging their equipment or our manhole covers. Hopefully these changes will result in more effective removal of snow and ice this winter.



## Committee Volunteers

The Board of Directors are always seeking volunteers to help assist the Board in community related tasks, social events, pool and clubhouse functions and community covenants enforcement. If you are interested in serving on a Committee, please contact Sydney at 498-2403 or email [slawson@mulloyproperties.com](mailto:slawson@mulloyproperties.com)



## STREET LIGHT OUT OR DAMAGED?

You can report street light issues directly to LG&E by calling 627-3313 or email your request to [bsc@lge-ku.com](mailto:bsc@lge-ku.com). You will need a physical address as to where the pole is located to report a problem to LG&E. It usually takes 7-10 business days for them to make the service call.



Waste Management is the mandatory trash service provider for Cooper Farms. 966-0117



Please store your garbage cans inside your garage when not on a trash pick up day.

## [www.cooperfarmms.net](http://www.cooperfarmms.net)



Please visit our community website for neighborhood updates, copies of newsletters, meeting dates, deed restrictions, contact information, etc.

If you have any ideas or suggestions for our website, please let us know!



The Cooper Farms Playground has been a great improvement to the neighborhood. It is wonderful to see how much use it gets and the joy it brings to our children. It is unfortunate however the amount of trash that is being thrown on the property and vandalism that has occurred over the last year. The playground is designed as a place for families to bring their children to play.

The vandalism includes graffiti, burns, cut marks, damage to the playground rules sign including scratching out wording, denting, and even knocking the sign over. The mulch beds around the clubhouse have evidence of being caught on fire, the restroom doors have been kicked in, a stepping stone has been stolen. The round picnic tables have been vandalized and moved from their sitting area to be used by skateboarders. The Board of Directors has decided to remove them from the playground for the winter to prevent further issues and store them inside the locked pool area.

Please talk to your families about respecting the facilities and the proper manner in which to use them. We are all in this together as a community and need to do our part in keeping our community nice.

The playground is open from sun up to sun down. NO Skateboarding or motorized scooters are allowed in the common areas of the clubhouse. Please do not litter, throw your trash in the garbage cans .



Don't be a litter bug

Need Assistance or have questions regarding your HOA?  
Call our Property Manager

Mulloy Properties  
8303 Shelbyville Rd  
Louisville, KY 40222

Property Manager : Sydney Lawson  
502-498-2403  
[slawson@mulloyproperties.com](mailto:slawson@mulloyproperties.com)



Have a Happy and Safe



Holiday Season

### Christmas Decorating Contest!!!!

Join in on the fun! We will once again have a decorating contest for homes in Cooper Farms\*. The Board of Directors will be judging the outside lights and decorations of homes on Monday, December 19<sup>th</sup> to award 3 prizes to the best decorated homes!



- 1st Place: \$100 Lowes Gift card
- 2nd Place: \$50 Lowes Gift card
- 3rd Place: \$25 Lowes Gift card



The board of directors will hand deliver each winner's prize the week of the 19<sup>th</sup>. The winner's names will also be posted on the community website and announced at the annual meeting.

\*You must be current with your annual assessments and considered in good standings with both Cooper Farms Community and Recreational Associations to win. Members of the Board of Directors are not allowed to participate.



## Cooper Farms Membership



It continues to be brought to our attention that some residents in Cooper Farms believe that membership to the Recreational Association is optional. We would like to take this time to remind all Owners that membership is NOT optional, it is MANDATORY. Each Lot Owner, per the Declaration of Restrictions for Cooper Farms, is automatically a member of the Cooper Farms Community and Recreational Associations. Each Lot Owner is equally responsible for the annual membership dues to both Associations to care for and maintain the common elements, community and recreational facilities.

We continue to hear from new Owners or Realtors that they are being told it is optional. Please take note of this and remind your neighbors and realtors that the memberships are mandatory and come along with the acceptance and execution of a Deed to a Lot in Cooper Farms.

Cooper Farms Community & Recreational Association  
C/o Mulloy Properties  
8303 Shelbyville Road  
Louisville, KY 40222

*Please Read! Important Information for Cooper Farms*